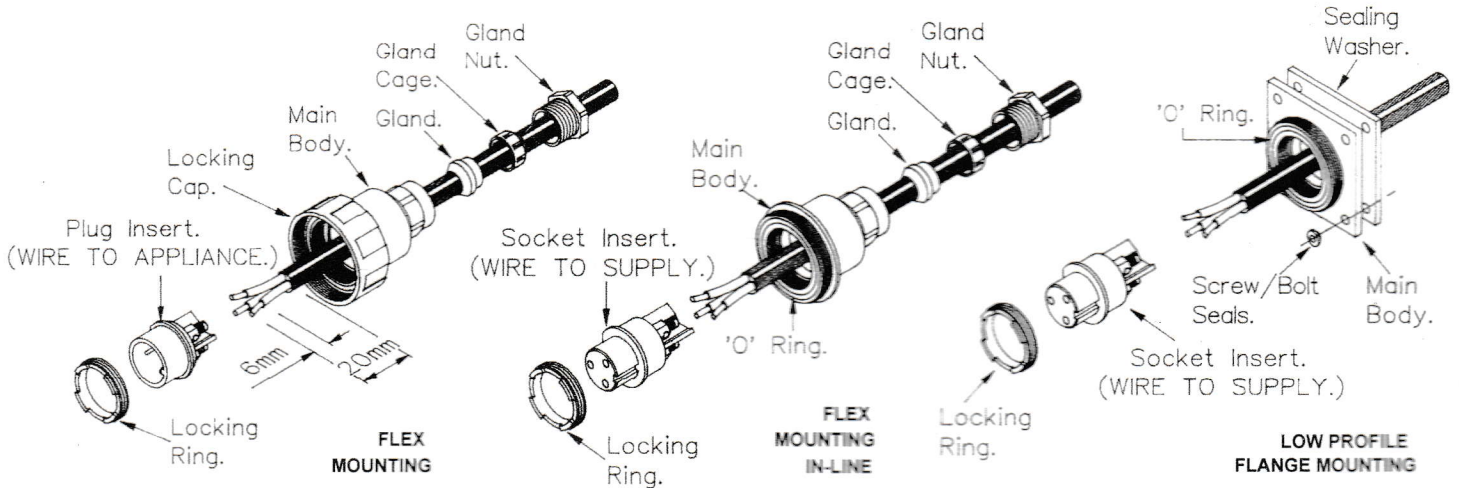
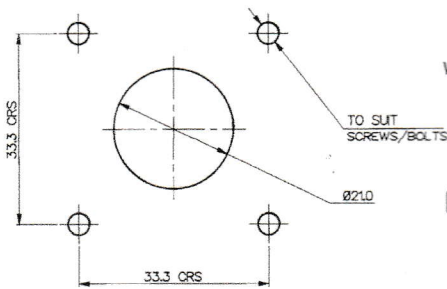


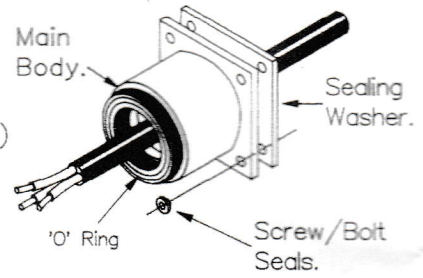
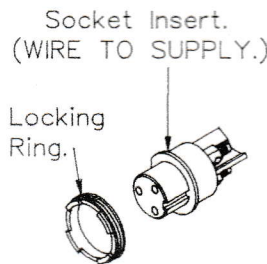
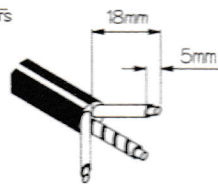
INDEX MARINE EQUIPMENT LTD
WATERPROOF ELECTRICAL CABLE CONNECTOR
WIRING AND ASSEMBLY INSTRUCTIONS



PANEL CUT-OUTS



WIRE STRIPPING DETAILS



BULKHEAD/SURFACE MOUNTING

Mains Wire Connections

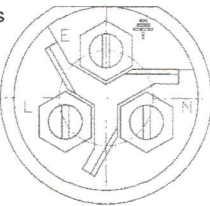
Important connect wires

Brown to terminal L

Blue to terminal N

Green/Yellow to

terminal E



Use appropriate 12/24 V DC or 240V AC smooth circular cable only (6-8mm dia).

Other cable glands may be available to suit different cable diameters, please enquire

IMPORTANT SAFETY NOTICE

For your protection all mains (240V) equipment used out of doors, in damp or wet conditions should be supplied from a correctly fused source and protected by an approved R.C.D. to BS7071 or BS7288 or BS4293.

IF IN DOUBT SEEK ADVICE

Buccaneer models are available in 2,3,4,6,7 or 9 pin versions. It is important that these instructions are fully complied with to ensure this product is completely watertight and electrically safe - **IF IN DOUBT CONSULT A QUALIFIED ELECTRICIAN.** Always wire socket insert to supply, wire plug insert to appliance. However plug/socket inserts can be fitted into any style of main body to give correct plug/socket combination for your application

- 1 To remove plug or socket inserts for wiring, use cap assembly tool to unscrew locking ring.
- 2 As appropriate to main body type, thread cable through component parts as shown in the illustrations.
- 3 Strip insulation from cable as

- 4 2 to 7 pole inserts: Insert bare wire ends into terminals on plug/socket insert and fully tighten screws. Note: If connector is to be used on mains voltage ensure that wires are connected as shown below.

9 pole inserts: Pins and Sockets are supplied loose. These are ideally crimped, but careful soldering can work. After connecting wires draw cable back until plug/socket insert is correctly seated in D shaped location in the main body. Screw home locking ring using cap assembly tool.

- 6 For cable mounted units slide gland cage and gland down cable and into main body then screw gland nut fully home. It is essential to ensure that the gland nut is fully tightened to ensure cable is securely sealed and clamped. For chassis, bulkhead and flange units correctly seat sealing washer and main body onto mounting surface and screw down using rear nut or screw/bolts with seals. Ensure seals and glands are kept clean. Locking cap secures plug to socket.

For Help Please contact us:

www.indexmarine.uk.com

sales@indexmarine.uk.com

01202 746000