

- ◆ Diesel refuelling
- ◆ Container filling/emptying
- ◆ Wash down for car, caravan & boat
- ◆ Spraying/garden watering

LVM-111 12 volt pump

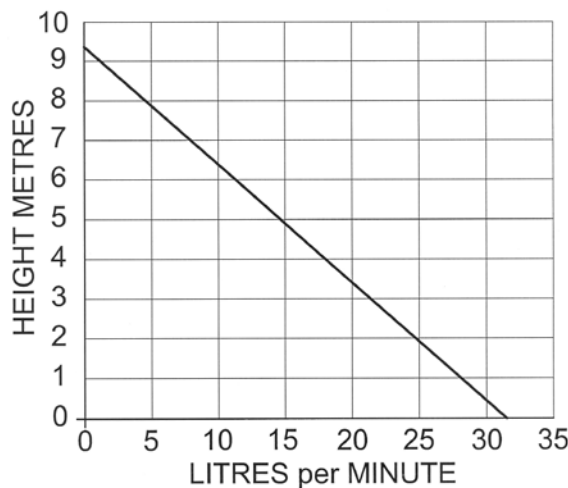
LVM-112 24 volt pump



Shown with filter attached

**FLOW RATE:**

Flow rate and current reduces as the height to be pumped increases

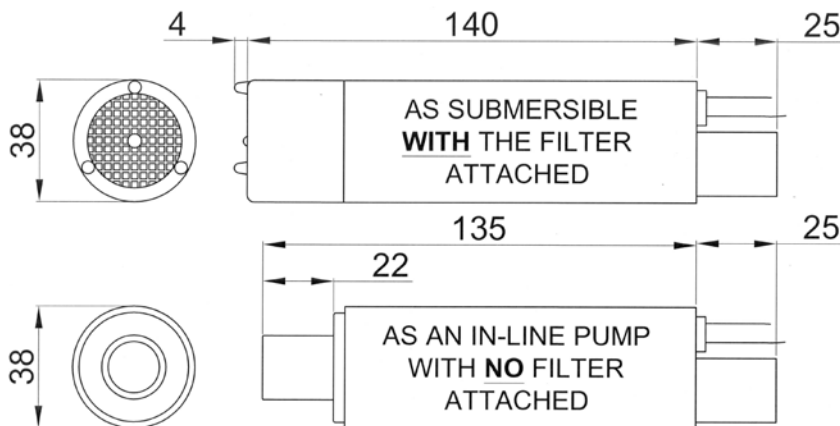


**RECOMMENDED FUSE SIZE:**

12 volt – 6 amp  
24 volt – 3 amp

**WEIGHT:** 0.57kg

**CONNECTIONS:** for 19mm (3/4") bore hose



**CONGO**  
**SUBMERSIBLE & IN-LINE**

**DIESEL**  
*or*  
**WATER**  
**TRANSFER**  
**PUMP**

LVM-111 12 volt d.c.  
LVM-112 24 volt d.c.

- ◆ Up to 32 litres (7 gallons) per minute
- ◆ Suitable for diesel fuel, water, seawater
- ◆ Temperatures up to 80°C
- ◆ Complete with 4m cable and crocodile clips
- ◆ Intermittent duty



Not suitable for pumping petrol, light hydrocarbons, non-aqueous solvents

Doc 665/13